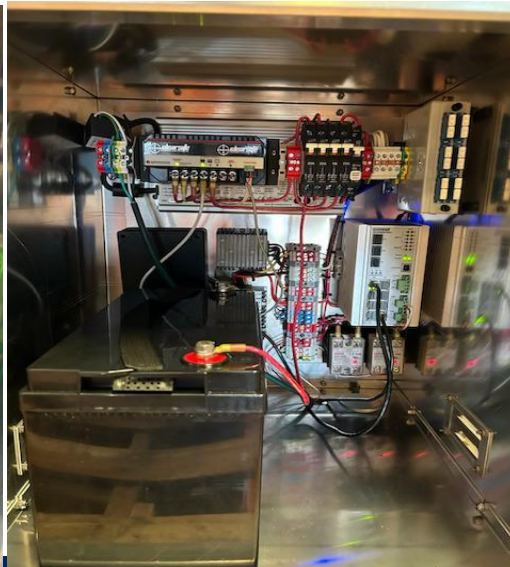
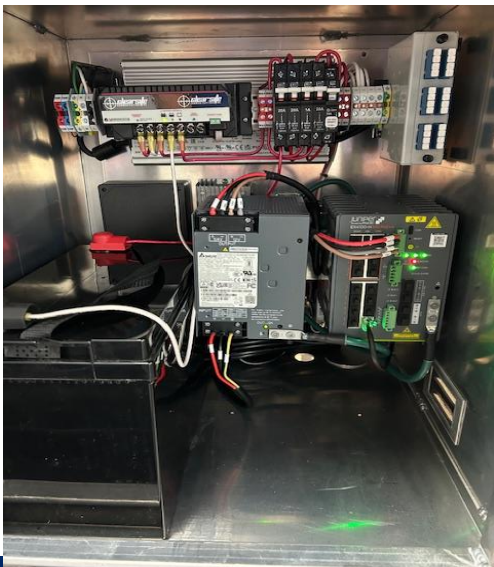


PPU-AC-400L

The Perpetual Power Unit (PPU) provides the hardware and software components necessary for the rapid, secure, and reliable deployment of cameras and sensors in many outdoor locations and configurations, such as perimeter systems and remote environments. With a single cost-effective platform that provides power for cameras, sensor processing, secure communications, and long battery backup, site deployment is simplified, and the stability and reliability of operation is greatly improved. The PPU provides the resources necessary to implement sites consisting of a mix of equipment from many manufacturers. It has been the central component for years in many installations around the world tasked with protecting critical assets.

PPU-AC-400L

- 12 VDC nominal battery system
- (1) 1.25kWh AGM deep cycle battery
- 24x7 operation from timed AC power sources
- High quality multi-stage charge controller
- Optimized battery charging algorithm
- Low voltage disconnect protects batteries
- Output voltages: 12VDC, 24VDC, 54VDC Optional: 110VAC, 220VAC, 48VDC
- Separate computer controlled 24VDC output circuit for lighting (not battery backed)
- Surge protection device
- Redundant surge protection
- Real time data reporting (such as battery voltage, charge state, etc.)
- Real time event reporting (such as loss of expected site power, operational state, security and system events)
- Provides remote operator ability to reset powered devices (cameras, communications gear, etc.) without a physical roll to site
- Nema 3R purpose built vented aluminum enclosure with multiple mounting options
- Made in the USA



PPU-AC-400L

Specifications – PPU-AC-400L

INPUT	
AC Voltage Range	100-277VAC 50/60Hz – MUST BE FUSED
AC Max Power Consumption	500 Watts
OUTPUT	
Standard Voltages	12VDC / 24VDC / 54VDC
Optional Voltages	48VDC / 110VAC / 220VAC
Max Load	175 Watts
Max Continuous Load	140 Watts
Max Continuous Lighting Load	260 Watts, 2 relay outputs @130 Watts each
BATTERY	
Type	VRLA Sealed AGM Deep Cycle 12V
Capacity	(1) 1.25kWh batteries
Terminal Torque	70 lb-in
CHARGE CONTROLLER	
Max Charging Power	180 Watts (15 Amps)
Charging Algorithm	3 Stage (Bulk, Absorption, Float)
Temperature Compensated	Yes
Low Voltage Load Disconnect	Yes
Electronic Protections	Overload, Short Circuit, High Voltage
SYSTEM CONTROLLER (PPC)	
Web Based	Yes
Remote Control	Yes
Remote Alerts	Yes
Connector	RJ45
BREAKERS	
Protections	Battery, DC In, PPC, Load
Torque	20 lb-in
LOAD WIRING	
Size	22-8 AWG
Stripping Length	12 mm
Torque	14 lb-in
ENCLOSURE	
Type	Vented Aluminum NEMA 3R
Dimensions	18"x18"x20" (LxWxH)
Weight With Batteries	110 Pounds
Conduit Knockouts	3/4 Inch & 2 Inch NPT
ENVIRONMENTAL	
Operating Temperature	-20C to +50C
Operating Humidity	10% - 95% Non-Condensing
OPTIONS	
PPU-POE	5 Port Hardened PoE Switch 4 30W / 1 SFP Port
PPU-POE-60	6 Port Hardened PoE Switch 4 60W / 2 SFP Ports
PPU-POE-L3	11 Port Hardened Managed PoE Switch 4 30W / 4 60W / 3 SFP Ports
PPU-ILC	Intelligent Lighting Control Module and Software
PPU-TAMPER	Tamper Switch / Magnetic