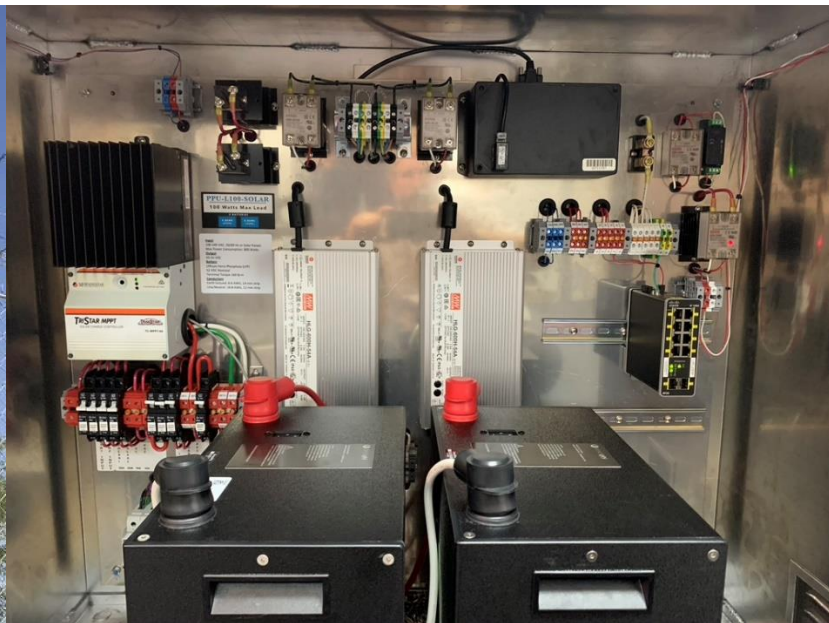


PPU-Max-Flex-Lithium

The Perpetual Power Unit (PPU) provides the hardware and software components necessary for the rapid, secure, and reliable deployment of cameras and sensors in remote environments. The PPU is changing the way remote deployments are implemented. With a single cost-effective platform that provides power for cameras, sensor processing, secure communications, and long battery backup, deployment of a remote site is simplified, and the stability and reliability of operation is greatly improved. The PPU provides the resources necessary to implement sites consisting of a mix of equipment from many manufacturers. It has been the center point for years in installations around the world, protecting critical assets.

PPU-Max-Flex-Lithium

- 48 VDC nominal system
- (2) 3.8kWh Lithium batteries
- (4) Solar Panels up to 1400 watts
- 24x7 operation from timed AC power sources
- High quality multi-stage charge controller
- Optimized battery charging algorithm
- Low voltage disconnect protects batteries
- Output voltages: 12VDC, 48VDC Optional: 110VAC, 220VAC, 24VDC
- Type 1 surge protection device
- Redundant surge protection
- Real time data reporting (such as battery voltage, charge state, etc.)
- Real time event reporting (such as loss of expected site power, operational state, security and system events)
- Provides remote operator ability to reset powered devices (cameras, communications gear, etc.) without a physical roll to site
- Nema 3R purpose built vented aluminum enclosure with multiple mounting options
- Made in the USA



PPU-Max-Flex-Lithium

Specifications – PPU-Max-Flex-Lithium

INPUT	
Solar Panel Max Power	4 Solar Panels up to 1400 Watts
AC Voltage Range	100-277VAC 50/60Hz
AC Max Power Consumption	800 Watts
AC Protection	Type 1 SPD – Monitored
OUTPUT	
Standard Voltages	12VDC, 48VDC
Optional Voltages	110VAC / 220VAC / 24VDC
Max Continuous Load (Solar)	100 Watts (based on location)
Max Continuous Load (AC)	200 Watts
BATTERY	
Type	Lithium Ferro Phosphate (LFP)
Capacity	7.6 kWh (2) 3.8kWh Batteries in Parallel
Terminal Torque	160 lb-in
CHARGE CONTROLLER	
Max Charging Power	60 Amps
Charging Algorithm	3 Stage (Bulk, Absorption, Float)
Temperature Compensated	Yes
Low Voltage Load Disconnect	Yes
Electronic Protections	Overload, Short Circuit, High Voltage
SYSTEM CONTROLLER (PPC)	
Web Based	Yes
Remote Control	Yes
Remote Alerts	Yes
Connector	RJ45
BREAKERS	
Protections	Battery, DC In, PPC, Load
Torque	20 lb-in
LOAD WIRING	
Size	22-8 AWG
Stripping Length	12 mm
Torque	14 lb-in
ENCLOSURE	
Type	Vented Aluminum NEMA 3R
Dimensions	40"x22"x33" (LxWxH)
Weight With Batteries	290 Pounds
Conduit Knockouts	½ Inch & ¾ Inch NPT
ENVIRONMENTAL	
Operating Temperature	-20C to +50C
Operating Humidity	10% - 95% Non-Condensing
OPTIONS	
PPU-POE	5 Port Hardened PoE Switch 4 30W / 1 SFP Port
PPU-POE-60	6 Port Hardened PoE Switch 4 60W / 2 SFP Ports
PPU-POE-L3	11 Port Hardened Managed PoE Switch 4 30W / 4 60W / 3 SFP Ports
PPU-LTE	Hardened LTE Router – Managed by PPU – Works with most major US carriers
PPU-ILC	Intelligent Lighting Control Module and Software
PPU-TAMPER	Tamper Switch / Magnetic
PPU-INV	120VAC Inverter
PPU-TOPM-4	Top of Pole Mount for 4 Solar Panels